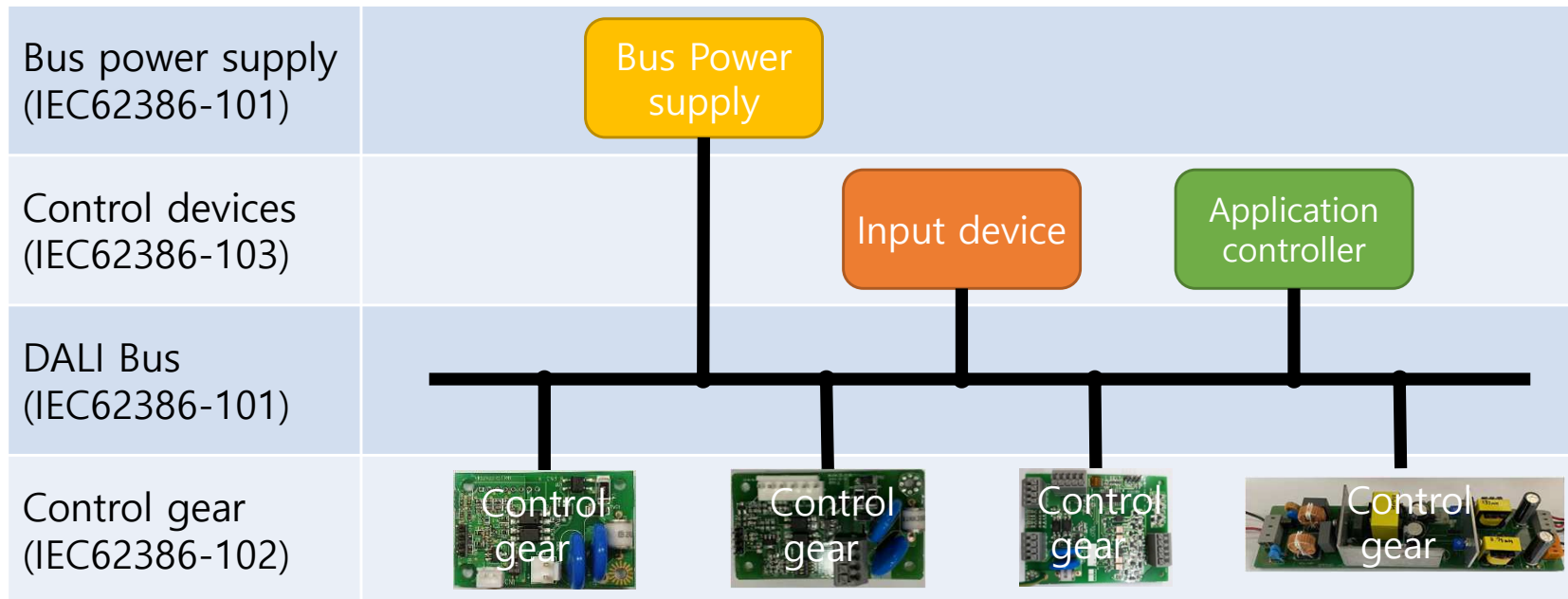






# DALI (Digital Addressable Lighting Interface)

- DALI, or Digital Addressable Lighting Interface, is a **dedicated protocol for digital lighting control** that enables the easy installation of robust, scalable and flexible lighting networks.
- With DALI, the broadcast option is also available; in addition, with simple configuration, each DALI device can be assigned a separate address, allowing **digital control of individual devices**.
- The digital nature of DALI allows **two-way communication** between devices, so that a device can report a failure, or answer a query about its status or other information.

# DALI (Digital Addressable Lighting Interface)



# WING ON DALI Control gear

Model	Dimension(Unit:mm)	Function	Applied Standards
WS-DALI2-1C-M	70 X 40 X 20(H)	A Device that receives and analyzes DALI communication signals and outputs a PWM signal for dimming LED lighting.	IEC 62386-101 Ed2.0 IEC 62386-102 Ed2.0 IEC 62386-207(DT6) Ed2.0
WS-DALI2-4C-MINI	55 X 35 X 20(H) 	A Device that receives and analyzes DALI communication signals and outputs a PWM signal for dimming 3 or 4-channel full-color LED lighting.	IEC 62386-101 Ed2.0 IEC 62386-102 Ed2.0 IEC 62386-207(DT6) Ed2.0 IEC 62386-209(DT8) Ed1.0
WS-DALI2-4C-TU	66 X 86 X 20(H) 	A Device that receives and analyzes DALI communication signals and outputs pulse signals for switching 4-channel remote control relay.	IEC 62386-101 Ed2.0 IEC 62386-102 Ed2.0
WS-DALI2-1C-TUW	110 X 40 X 18(H) 	A Device that receives and analyzes DALI communication signals and control a internal relay.	IEC 62386-101 Ed2.0 IEC 62386-102 Ed2.0 IEC 62386-208(DT7) Ed1.0
WS045140_D22C	210 X 55 X 25(H) 	A LED Driver that controls receives and analyzes DALI communication signals and CC type dimming of 2-channel Tunable White LED lighting by color temperature and brightness. DiiA Association certified product.	IEC 62386-101 Ed2.0 IEC 62386-102 Ed2.0 IEC 62386-207(DT6) Ed2.0 IEC 62386-209(DT8) Ed2.0

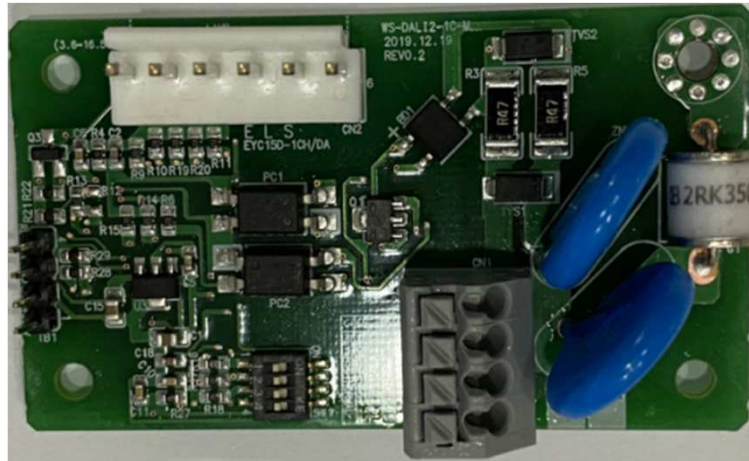


## WS-DALI2-1C-M

Rated Input Voltage 6.3~16.5VDC

Output Specifications

4ch/0~100% 1kHz PWM

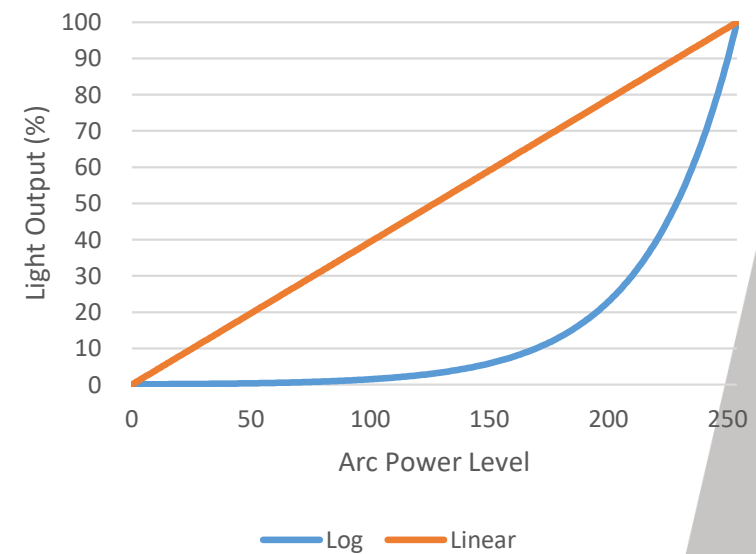
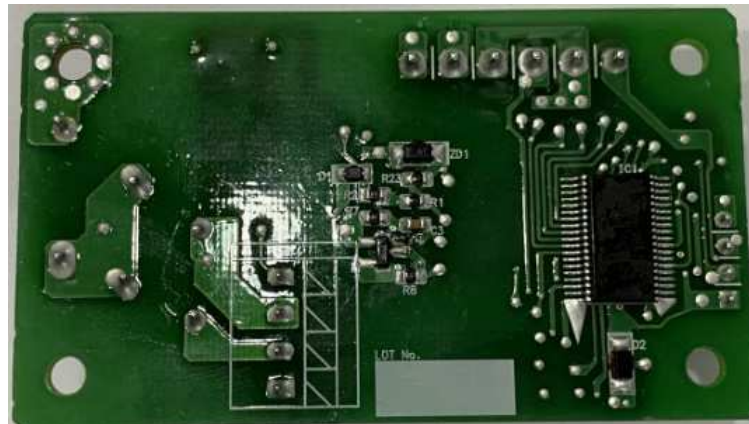


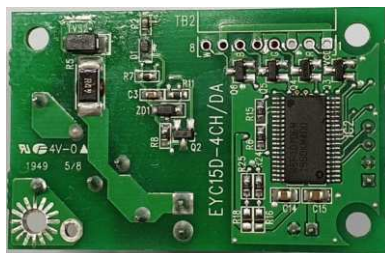
### Product details

IEC 62386-102 Ed2.0

DALI/PWM dimmer automatic recognition.

Dimming curve selectable.





## WS-DALI2-4C-MINI

Rated Input Voltage 6.3~16.5VDC

Output Specifications

4ch/0~100% 1kHz PWM

### Product details

IEC 62386-102 Ed2.0

DT6 (LED control) Ed 2.0

DT8 (Colour control) Ed 1.0

RGB Colour control via XY-coordinate

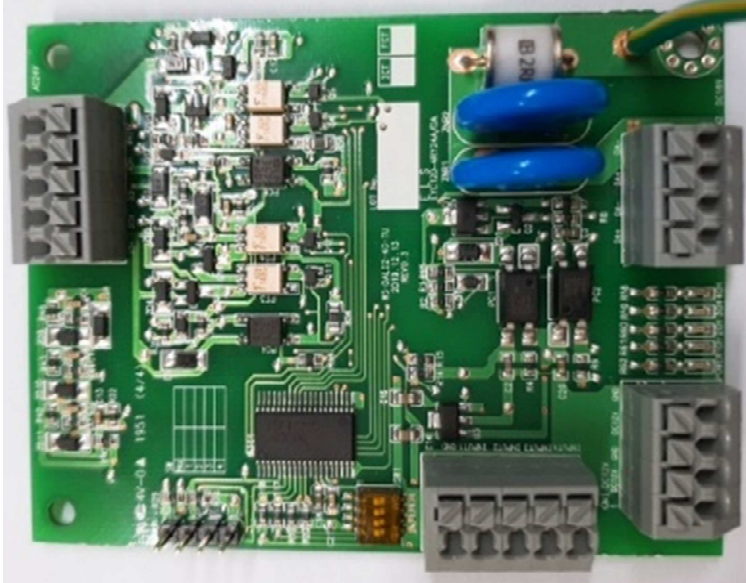
Tunable white control that warm white and cool white via color temperature



#### 仕様

定格光束(器具光束)	2500 ℓ m
消費電力(100V/200V~242V)	81.5W
固有エネルギー消費効率(100V/200V~242V)	30.6 ℓ m/W
LEDモジュール寿命	40000時間(光束維持率75%)





## WS-DALI2-4C-TU

Rated Input Voltage 12VDC

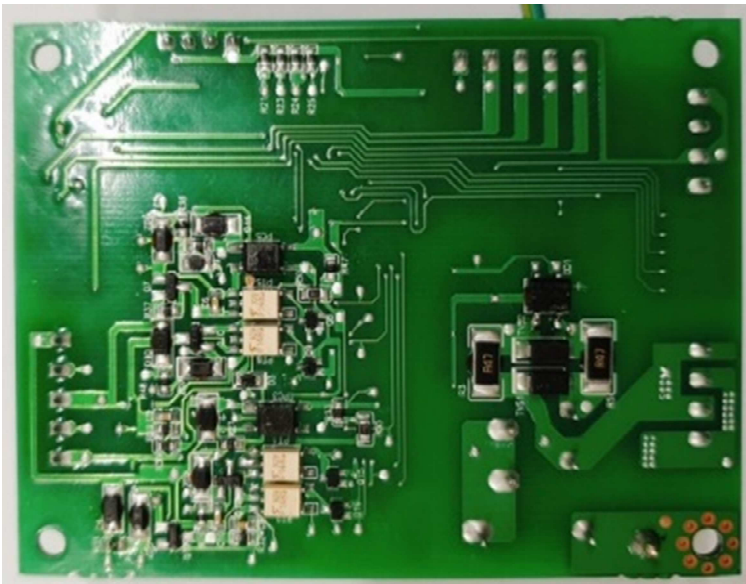
Output Specifications

4ch/Remote control Relay

### Product details

IEC 62386-102 Ed2.0

Independent address allocation to each remote control relay.



## WS-DALI2-1C-TUW

Rated Input Voltage 100~242VAC

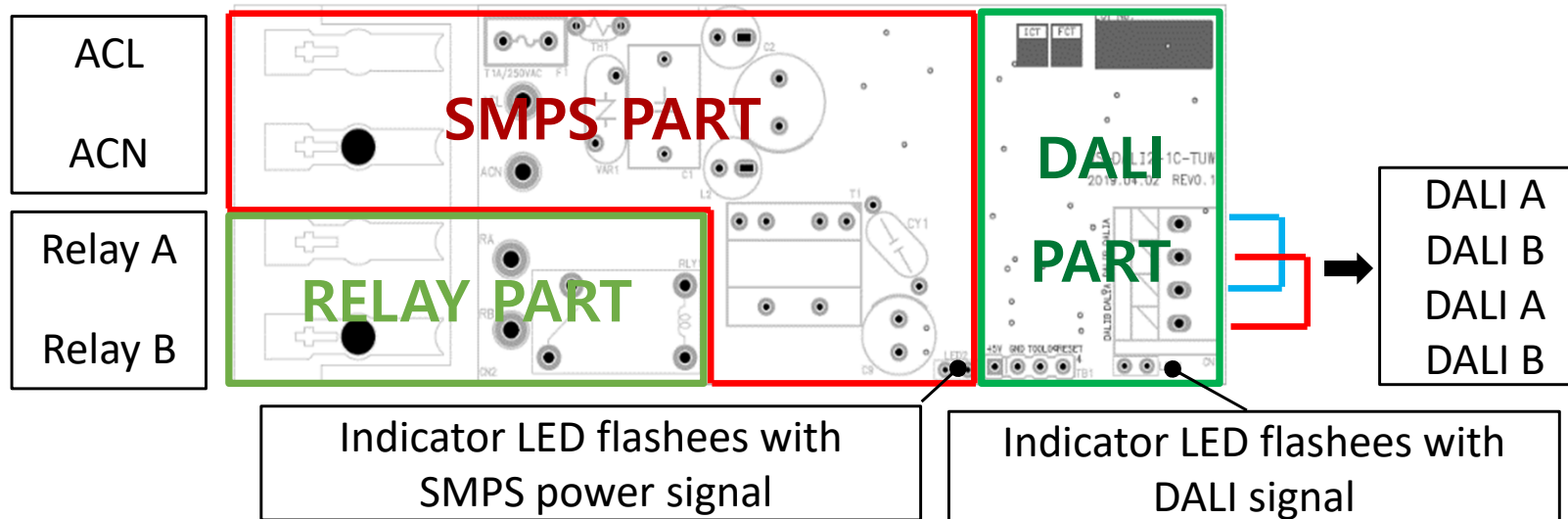
Output Specifications 1ch/Internal Relay



### Product details

IEC 62386-102 Ed2.0

IEC 62386-208 Ed1.0 DT7 (Switching function)



## HAMONIA WS045140-D22C DALI-2 Tc dimming CC driver

### General information

DALI Product ID	6031
Product Name	HAMONIA WS045140-D22C DALI-2 Tc dimming CC driver
Creator	Wing On Power Solutions & Trading Services Limited
Brand Name	Wing On (Japan) Trading Limited
Company Name	Wing On Power Solutions & Trading Services Limited
Status	Certified
Date submitted	2022-11-04
Product Part Number	WS045140_D22C
GTIN	4595644503018
Bus unit configuration	-
Serial/Identification Number	

### Hardware/firmware information

Hardware version	0.0
Firmware version	1.0

### Testing

Company Carrying out the test	Wing On Power Solutions & Trading Services Limited
Location of test	Seoul, Korea
Test operator	JOCHYEONG KIM
Test house	No
Test reference	
Test conditions	100V AC, 50Hz 140V 300mA 42W Tunable White
Test type	Full
Family reference product ID	-
DALI test sequence software version	2.3.3.0

### Technical

Bus current consumption	1.2
Guaranteed supply current	0
Maximum supply current	0

### Version Specific notes

2022.11.01 Released firmware rev 1.0

### Additional info

Date test file uploaded	2022-11-04
Date tests completed	2022-11-03

### Description

45W DALI-2 Tunable white LED Driver(device type 6 & device type 8) input 100-242VAC 50/60Hz output 70-140V 300mA(1-100% dimmable)

### DALI parts and versions

101	2.0
102	2.0
207	2.0
209	2.0

## WS045140\_D22C

Rated Input Voltage 100~242VAC

Output Specifications 70-140V/300mA

2ch/Tunable White

### Product details

IEC 62386-207 Ed2.0 - DT6 (LED Control)

IEC 62386-209 Ed2.0 - DT8 (Colour Control)

[DiiA DALI2 Certify products](#)

